

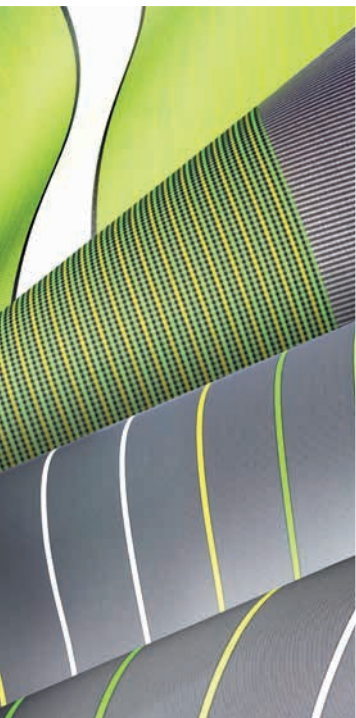
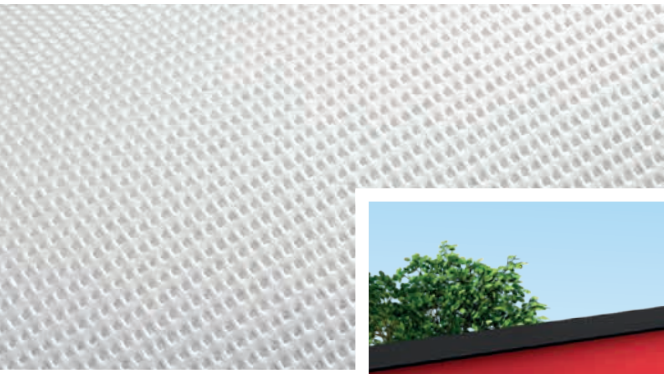
ERHARDT BS-SYSTEM



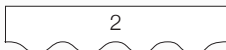
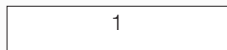
AN AWNING SYSTEM WITH THREE BASIC MODELS
AND MANY EXTRAS AND VARIATIONS –
THE RIGHT SOLUTION FOR EVERY NEED

 **ERHARDT
MARKISEN**

Mehr. Freude. Leben. Zuhause.

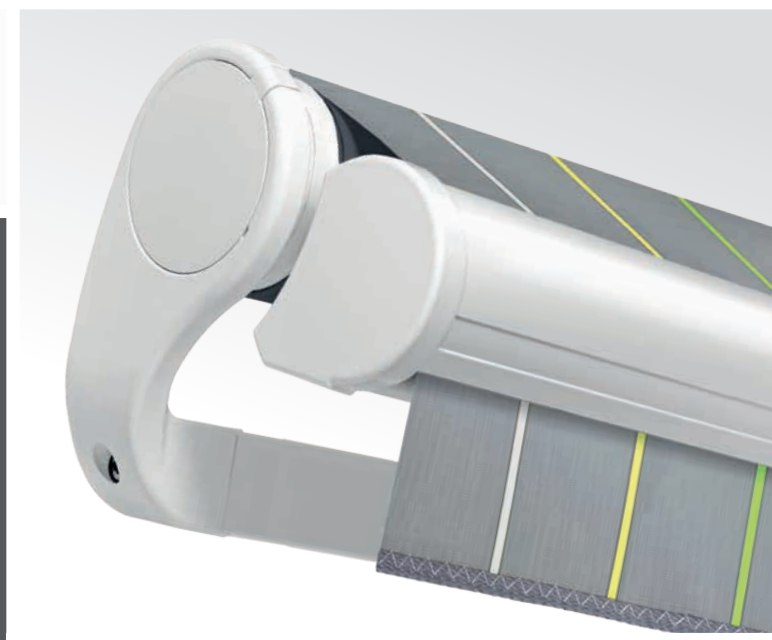


Valance forms:



ERHARDT BS: the open folding-arm awning for contemporary expectations

- The ERHARDT BS is an open folding-arm awning for use in protected areas.
- Ideal for terraces and under balconies.
- The ERHARDT BS has an exceptionally stable design and is manufactured using only durable, high-quality materials. Its sophistication lies in its simplicity and the modular concept.
- The clean design of the frame can be adapted to suit any style of construction using our modern and elegant fabric selection.
- We recommend our Soltis fabric collection for the double awning. This fabric allows a view towards the outside from the inside.

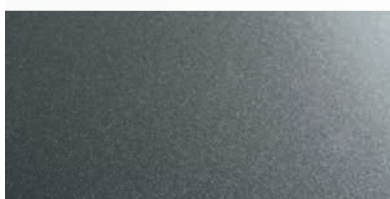


ERHARDT BS SYSTEM

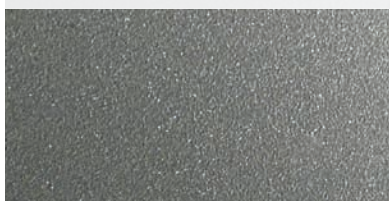
CHOOSE THE AWNING OF YOUR DREAMS –
THE MODERN BS SYSTEM MEETS EVERY
EXPECTATION



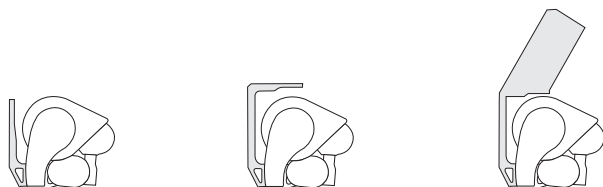
Frame colour, white



Frame colour, anthracite



Frame colour, grey-aluminium structured



ERHARDT BS-D: The open folding-arm awning with rain cover offering basic protection

- The ERHARDT BS-D corresponds in appearance to the ERHARDT BS, but it has been equipped with an additional rain cover.
- The high-quality tilting arm bearing used in the BS-D ensures precision closing with a perfect seal.
- This protects the rolled up fabric from above against the influence of weather conditions.
- The sleek drop profile with a valance provides a great deal of creative freedom.
- The »Deluxe« version has a designer drop profile instead of a fabric valance.
- All ERHARDT BS models are also available as a double awning and in the »Deluxe« version.

ERHARDT BS SYSTEM AT A GLANCE

All of the ERHARDT BS System Features

Maximum dimensions	700 x 400 cm (width x depth) »Deluxe« double awning: 700 x 350 cm (width x depth)
BS: Open folding arm awning	No protection
BS-D: Open folding arm awning	Protection from above (rain cover)
BS-H: Sleeve awning	Protection from all sides (rain cover and lower shell profile)
Frame colour	<ul style="list-style-type: none"> • White (RAL 9016) • Grey-aluminium structured (RAL 9007 finely structured) • Anthracite (DB 703)
Custom colour	Any RAL colour is possible
Fabric designs (over 250 designs)	<ul style="list-style-type: none"> • Collection: SUNSILK • Exclusive collection: SUNVAS CASA • Classic collection • Acrylic collection • Double awning: Soltis
Inclination angle	5° - 45°
Special features	<ul style="list-style-type: none"> • With valance as standard • »Deluxe« model: Designer drop profile instead of fabric valance • Optionally as a double awning • Two coupling alternatives • Models BS-H and BS-D with high-quality tilting arm bearing • Also possible as a double awning with length of 400 cm

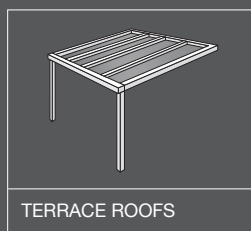
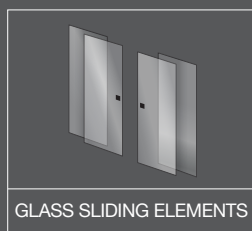
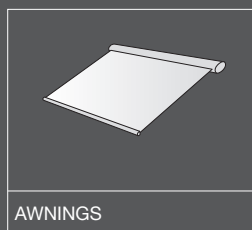
Optional additional features

- Motor control (also for double awning)
- Remote control (also for double awning)
- Automatic wind and sun sensors
- Wireless oscillation sensor
- Awning fabric with welding adhesive technology
- Lighting rail (optionally dimmable)
- Infrared heater (including wireless level control)
- Double awning (Vario-Valance) also for »Deluxe« model
- Variomatic drive (BS only): 0° - 90° inclination angle
- »Deluxe« version: Designer drop profile instead of fabric valance

ERHARDT L version: More length than width



Our L models are designed for exceptional stability using different arm positions. The folding arms are arranged one above the other. This makes dimensions with more projection length than width possible (e.g.: 250 cm x 400 cm). Ideal for deep balconies and terraces.



Your ERHARDT specialised partner

For more information, see
www.erhardt-markisen.de

ERHARDT
MARKISEN

Mehr. Freude. Leben. Zuhause.

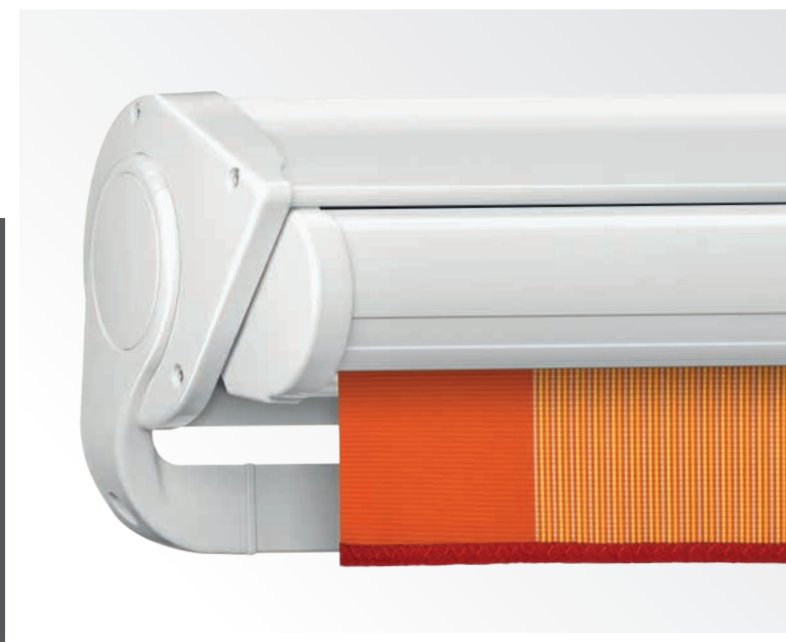


Double awnings
BS-H and BS-H
»Deluxe« with
retracted
vertical awning



ERHARDT BS-H – The sleeve awning with rain cover and protective profile from below

- The ERHARDT BS-H is identical in construction to the ERHARDT BS-D, but also has an additional lower shell, making it a sleeve awning.
- The high-quality tilting arm bearing used in the BS-H ensures a good seal when closed.
- The rolled up fabric enjoys full protection with the sleeve and rain cover.
- A sleeve awning offers protection similar to that of a high-quality cassette awning. When closed, the folding arms remain visible from below on a sleeve awning.



**ERHARDT[®]
MARKISEN**

Mehr. Freude. Leben. Zuhause.

ERHARDT BS SYSTEM OVERVIEW

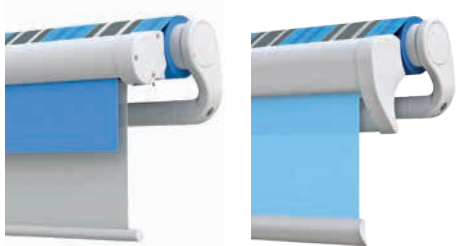
ERHARDT BS



ERHARDT BS This is an open folding-arm awning. The fabric valance shields the folding arms from view.



ERHARDT BS »Deluxe« Equipped with a designer profile instead of a fabric valance.



Double awning
ERHARDT BS

Double awning
ERHARDT BS
»Deluxe«

ERHARDT BS-D



ERHARDT BS-D Corresponds to the BS but with an additional rain cover offering basic protection for the fabric shaft. The BS-D is equipped with a high-quality tilting arm bearing to ensure precision closing.



ERHARDT BS-D »Deluxe« Equipped with a designer profile instead of a fabric valance.



Double awning
ERHARDT BS-D

Double awning
ERHARDT BS-D
»Deluxe«

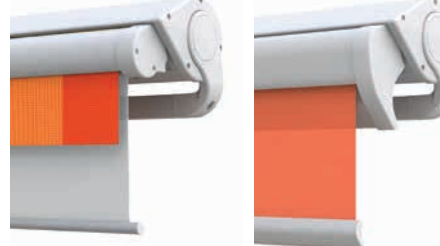
ERHARDT BS-H



ERHARDT BS-H This is a sleeve awning with a rain cover and lower shell profile providing all-round protection. The BS-H is equipped with a high-quality tilting arm bearing to ensure precision closing.



ERHARDT BS-H »Deluxe« Equipped with a designer profile instead of a fabric valance.



Double awning
ERHARDT BS-H

Double awning
ERHARDT BS-H
»Deluxe«



The practical double awning: The sophisticated trendsetter with perceptible usefulness and true added value.

The double awning can be extended vertically up to 1.70 m (using a crank or remote-control motor) to significantly improve the shaded area. What's more, the vertical awning offers excellent protection against glare when the sun is low in the sky. The Soltis fabric designs give you a view towards the outside, but protect you from curious glances looking in.

Example: Terrace facing southwest on 25 May at 3 p.m.; Shown without and with a double awning

